
RETS Connector Quick Start Guide

Document Version: 1.1

Market**Linux**[®]

Copyright © 2007 by MarketLinx, Inc. All rights reserved. No part of this document may be reproduced or transmitted in any form or by any means without the written permission of MarketLinx, Inc.

Since this document references the RETS 1.5 standard, the following paragraph is included as required by the RETS Working Group:

Copyright © 2003 by Fidelity National Information Systems, Inc., WyldFyre Technologies, Inc., RealSelect, Inc., Interealty Corporation, and National Association of Realtors® (collectively, "Authors"). All rights reserved. This document and translations of it may be copied and furnished to others, and derivative works that comment on or otherwise explain it or assist in its implementation may be prepared, published and distributed in whole or in any part without restriction, provided that the above copyright notice and this paragraph are included on all such copies and derivative works. However, this document itself may not be modified in any way, such as by removing the copyright notice or reference to the copyright owners except as required to translate it into languages other than English. The limited permissions granted are perpetual and will not be revoked by the copyright owners or their successors or assignees.

The copyright notice above was taken from *Real Estate Data Interchange Standard: Real Estate Transaction Specification*, Version 1.5; December 1, 2003; Second Edition. Each time the words "this document" appear in the above statement, they are referring to the document that defines the RETS 1.5 standard, not this document.

MarketLinx, the MarketLinx logo, RETS Connector, TEMPO and MLXchange are either registered trademarks or trademarks of MarketLinx, Inc. Any use of MarketLinx's marks requires prior written approval by MarketLinx, Inc.

Microsoft, Internet Explorer, and Windows are either registered trademarks or trademarks of Microsoft Corporation in the United States and/or other countries.

The names of other companies and products mentioned herein may be the trademarks of their respective owners.

Table of Contents

ABOUT RETS CONNECTOR	1
MINIMUM REQUIREMENTS	2
GETTING STARTED	3
Step 1: Get your Login and Server Information.....	3
Step 2: Install RETS Connector.....	3
Step 3: Define a Server	4
Step 4: Create Your Tasks	6
WORKING WITH SAVED TASKS	7

About RETS Connector

RETS Connector™ is designed to make it easy to download real estate data from RETS servers. Its intuitive interface will guide you through a simple 10-step process each time you create a task. (A task is a search or series of searches.) Once you create a task, you can modify it quickly and easily.

Other benefits:

- RETS Connector allows you to configure a download location for the data and choose the types of media that you want to download.
- A built-in task scheduler is included that can run tasks for you automatically. You can also receive email notifications when tasks fail.
- RETS Connector downloads in .txt format, so you can harness the data according to your own creative needs. You can even use it to duplicate databases.
- RETS Connector alerts you when the metadata changes so your searches will always be accurate.

RETS Connector was developed by Marketlinx, Inc. Although its functionality was tested on TEMPO™ and MLXchange™ RETS servers, it will work with any server that is RETS 1.5 compliant.

Minimum Requirements

- **Ability to open a zip file**
- **Operating Systems:**
Windows® 2000, Windows Server® 2003, Windows® XP,
and Windows Vista™
- **Windows® Installer 3.0.**
Windows® Installer 3.1 or later is recommended.
- **Microsoft .NET Framework 2.0** (Note: If Microsoft® .NET Framework 2.0 is not present during RETS Connector™ installation, it will be installed automatically.)
 - Required Software: Internet Explorer® 5.01 or later.
 - Disk Space Requirements: 280 MB (x86), 610 MB (x64)
- **Internet connection**
- **Active account with a RETS server**
- **Administrator rights for installation and task scheduling**

Getting Started

Step 1: Get your Login and Server Information

You will need to know the following information to configure RETS Connector:

- your user name
- your password
- the URL of your RETS server
- Does the RETS server observe Greenwich Mean Time (GMT) or local time when running queries? (Currently, MLXchange™ RETS servers observe GMT; TEMPO™ RETS servers observe local time.)
- Does the RETS server offer Offset support?

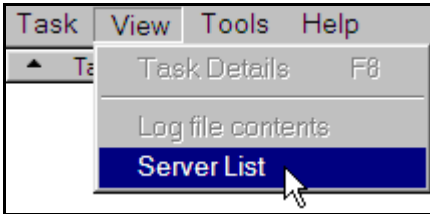
Contact your MLS to obtain this information.

Step 2: Install RETS Connector

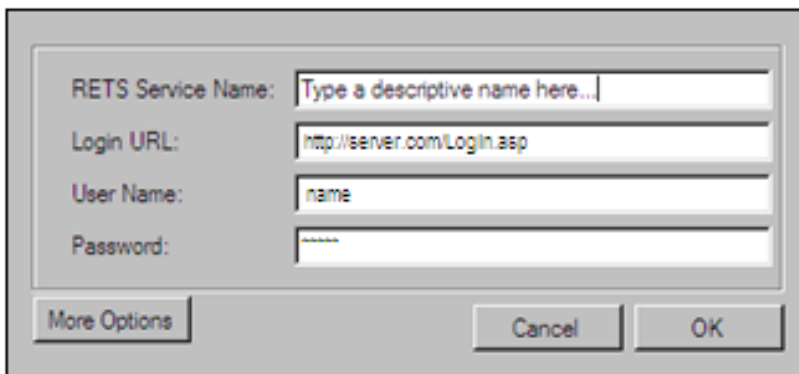
1. Download the installation files from the RETS Connector website. (These files are contained in a zip file.)
2. Unzip the folder that contains the files, then save the files to your computer.
3. From the **Start** menu, select **Run**.
4. Click the **Browse** button and locate the files that you downloaded during step 1.
5. Double-click Setup.exe, then click **OK** at the prompt.
6. Click **Next** after the welcome screen opens.
7. Read the license agreement, select the **I Agree** radio button, then click **Next**.
8. Select the default installation folder by clicking **Next**.
-or-
Click the **Browse** button select a different folder or to create a new one.
9. Follow the instructions on the screen to complete the installation.

Step 3: Define a Server

1. Start RETS Connector.
2. From the **View** menu, choose **Server List** (as shown below).



3. Click the **New** button.
4. Complete each field in the dialog box, then click **OK**. (Note: This is the login information that you obtained from your MLS.)

A screenshot of a dialog box titled 'Define a Server'. It contains four text input fields: 'RETS Service Name' with the placeholder text 'Type a descriptive name here...', 'Login URL' with 'http://server.com/Login.asp', 'User Name' with 'name', and 'Password' with a masked password '*****'. At the bottom, there are three buttons: 'More Options', 'Cancel', and 'OK'.

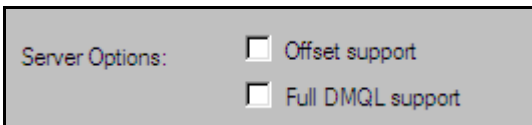
5. You can click the **More Options** button to see the following options:

- Server Options
- Test Connection

6. Complete these options as necessary.

A description of each option follows:

Server Options

A screenshot of a dialog box titled 'Server Options'. It contains two checkboxes: 'Offset support' and 'Full DMQL support', both of which are currently unchecked.

Select **Offset Support** if the server allows downloads to start with a specific record number.

Select **Full DMQL Support** if it is available on the server.

It is safe to leave these boxes clear.

Test Connection



Click the **Test Connection** button to check server access. If you entered the server URL or your login information correctly, RETS Connector will display the word *Success* at the bottom of a dialog box. Otherwise, you will receive an error response.

7. Click **OK** when you are finished.

If needed, you may specify more servers by repeating steps 3 through 7 above.

Step 4: Create Your Tasks

The final step is to create a task. (A task is simply one or more searches of the RETS metadata, saved under a single name.)

To create a new task, click the **New Task Wizard** button on the main screen (main window). The wizard will then guide you through a series of screens, each of which will help you complete part of the task:

Screen 1:	Create a new task	(Name your task, select a server, and enter your login information)
Screen 2:	Select a class to download	(Select the metadata class that contains the fields you need)
Screen 3:	Enter search criteria	(Define your search.)
Screen 4:	Select fields to download	(Select the fields that you want to download from the server.)
Screen 5:	Select data format options	(Select a data format and location for your downloaded data.)
Screen 6:	Select Media	(Select the types of media that you want to download.)
<i>At this point, RETS Connector will ask you if you want to create another search by repeating screens 1 through 6 or if you want to continue with screen 7.</i>		
Screen 7:	Set log file options	(Enable or disable log file creation.)
Screen 8:	Set notification options	(Configure RETS Connector to email you when a task does not run correctly.)
Screen 9:	Schedule downloads	(Schedule tasks to run on specific days and times.)
Screen 10:	Save your new task	

Once you have finished the last screen, RETS Connector will save your task. Now you can run it or modify it as needed.

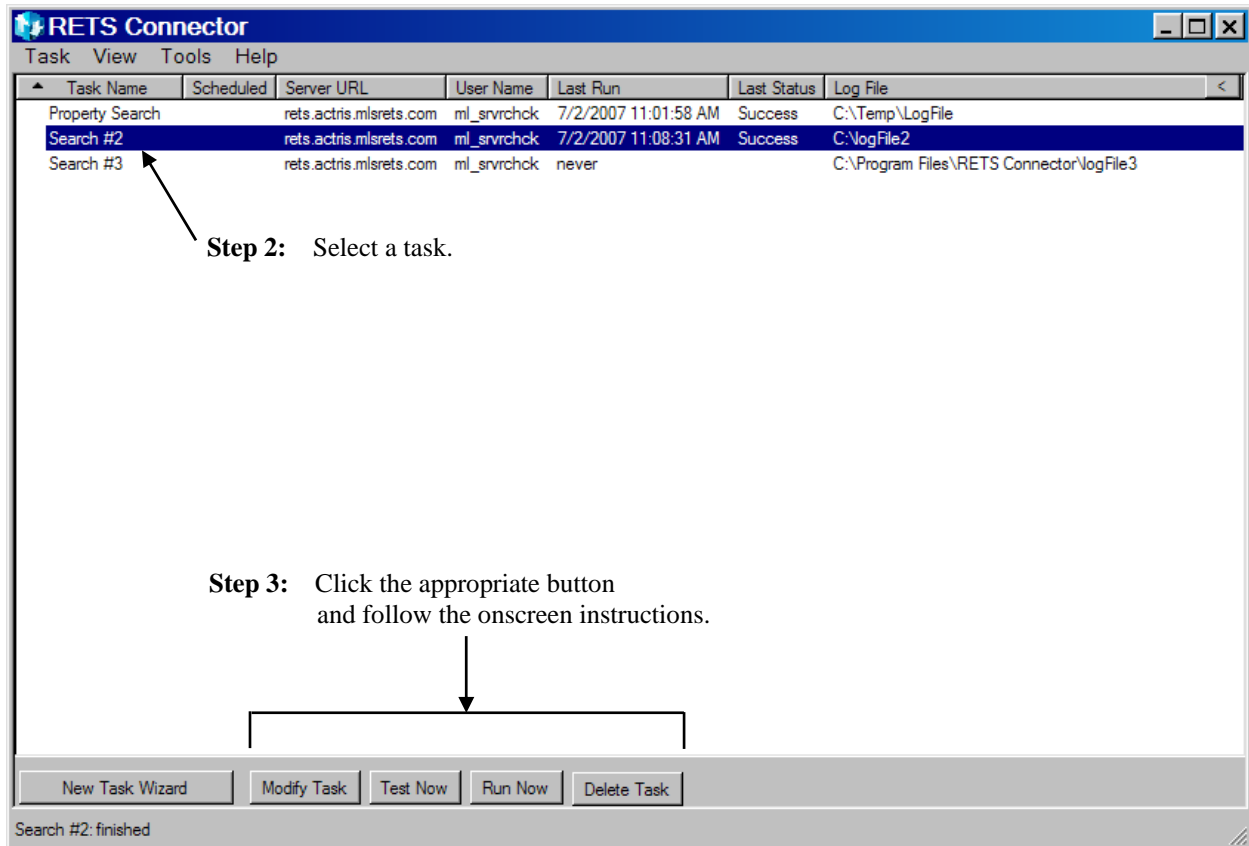
For more detailed information,

1. Go to the **Contents** tab in the RETS Connector help file.
2. Open the *Creating Tasks with the New Task Wizard* folder. This folder is located in the left-hand pane.
3. Select a sub-topic to display detailed instructions.

Working with Saved Tasks

Follow these steps to modify, test, run, or delete a saved task.

Step 1: Go to the main screen (also known as the main window).



For more detailed information,

1. Go to the **Contents** tab in the RETS Connector help file.
2. Open the *Working with Existing Tasks* folder. This folder is located in the left-hand pane.
3. Select a topic (i.e., *Modifying a Task*, *Testing a Task*, etc.). The help file will then display detailed instructions in the right-hand pane.